

Hi Everyone!

Thank you, Sarah for having me a guest Blogger today. Sarah asked that I share with you my process of designing Sweet Cherry Pie, a quilt that can be found in the latest edition of The Quilter magazine on page 56.

I am fortunate enough to work for many fabric designers and distributors that give me access to their upcoming lines. It's like Christmas when they send me jpeg's and I get to preview a new and upcoming collection. Ahhh...in your mind you can almost touch it and get giddy with excitement!

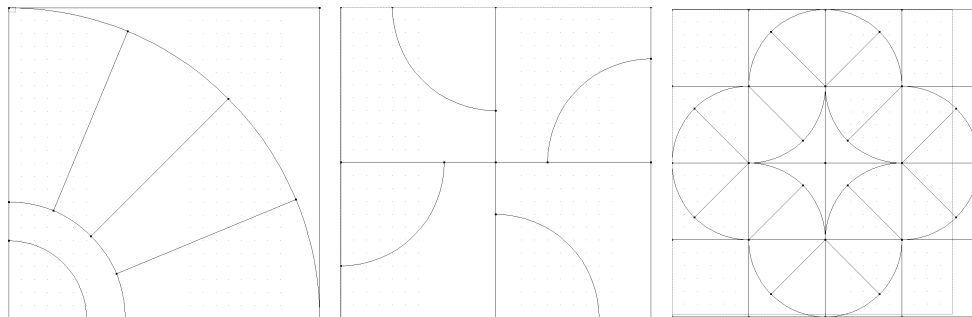
DESIGNING SWEET CHERRY PIE

- My first task is to down load the jpegs from the designer into a new project file in EQ. Uploading the fabrics into my file is a snap using the **import button** in the Library section. Select import and you can retrieve fabrics in moments using the **paintbrush tool**.

The great thing about EQ is that you get a really good idea of the fabric scale you are using and that will reflect in the block as you color them. YEA...it makes life so easy!

- Next task: hummm ...thinking a lot on how to interpret the fabric.

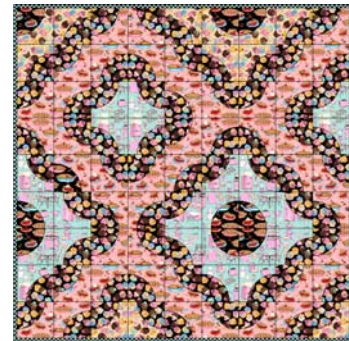
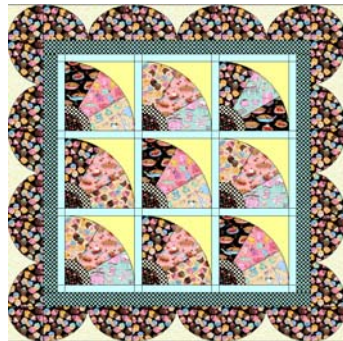
Unfortunately, EQ can't answer that question for me; but alas, I can go and look at thousands of blocks by searching in the **Block Library**. And if you are really smart you will have added **Blockbase 2** to your EQ library. Those additional blocks are fabulous additions to your library and what fun you can have. Honestly, you could spend an entire afternoon, most likely more, just gazing over the possibilities. When I am in the search mode for what I have in mind I can select from a **catalog of blocks, i.e. classics, stars, etc.** and then add the blocks I like by highlighting the block and then pushing the **add to sketchbook** button. Here are a few of the samples of blocks I downloaded from the library:



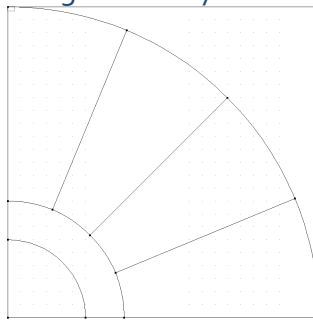
- I designed Sweet Cherry Pie using this process. I usually add approximately 20 blocks into the sketchbook before I start playing with designs just to give myself options...that is unless I already have a sure idea of where I am going with the design or if I am designing my own block in **Easy Draw** or a quilt with **Custom Set**.

I had over 80 quilts designed in entirely or just a few blocks that I colored with fabrics to see if they would work in the Sweet Cherry Pie design file. The What's Cookin' fabrics from RJR, used in Sweet Cherry Pie quilt, were a bit tricky as their scale was medium to very large. I usually don't get to see the actual fabrics for 3-6 months when the fabrics actually arrive in the states as strike offs. Sometimes the design fits just right, other times even after you have designed the quilt in EQ you have to make minor tweaks .

You can easily go back into your design and make a few changes to see what that will do to the design. Did I tell you how much I love EQ? Only a few times have I had to refocus the design. That is beauty of EQ! You get a very realistic idea for what is going to happen so you don't waste fabric trying out a dozen things in the attempt to create something wonderful. Here are a few of the outtake designs...



- The block or blocks have been chosen and it's time to move onto the design layout of the quilt.
- Do you want sashings, cornerstones, etc? These are easy to add under the **layout program**.
- After block was selected then I decided on the layout. Vertical, horizontal, on point, etc. Sweet Cherry Pie was best laid out horizontally I thought. I finally decided on the fan block called Fan Dance #4.



- Playing with the block is always beneficial. Using the **rotate block tool** is a great way to give your block an entirely different look. Laying out the block in many different formats and then coloring them until I achieve something that looks appealing. Using the **paint brush tool**, color in the design. Sometimes coloring only one block will let you know if it's going to work or not.
- Finally after much experimentation the quilt is complete. I usually do it 3 or 4 color and pattern variations as the magazines like to choose from a few designs. Often they add their input to tweak it a bit and VIOLA, it's a design ready to be made up.



- Next I can give the distributor a good idea of the yardages that will be required by going to **File** and choosing the **Print** button. This will then give me the option to choose how to make the quilt. I chose **Rotary** and EQ will estimate how much of each fabric will be needed. How easy is that?

EQ has changed the way we look at quilting. Many of my designer friends still use graph paper to create their quilts. I don't fault them for that, but EQ opens up avenues of opportunities and designs for everyone. You can make up your own block, use a classic or mix them together. It's a perfect marriage of technology and creativity!

To see more of our designs go to www.twosashquilts.com. A new website is on the horizon and we will be having lots of giveaways. Check back in 2-3 weeks!

Happy Stitching and designing with EQ!

Dodi
Two Sisters at Squirrel Hollow
Little Londyn
dodipoulsen@twosashquilts.com